

# HS2's flexible Design Approach to Old Oak Common Station

Laura Kidd HS2 Head of Architecture

# Old Oak Common Aerial View



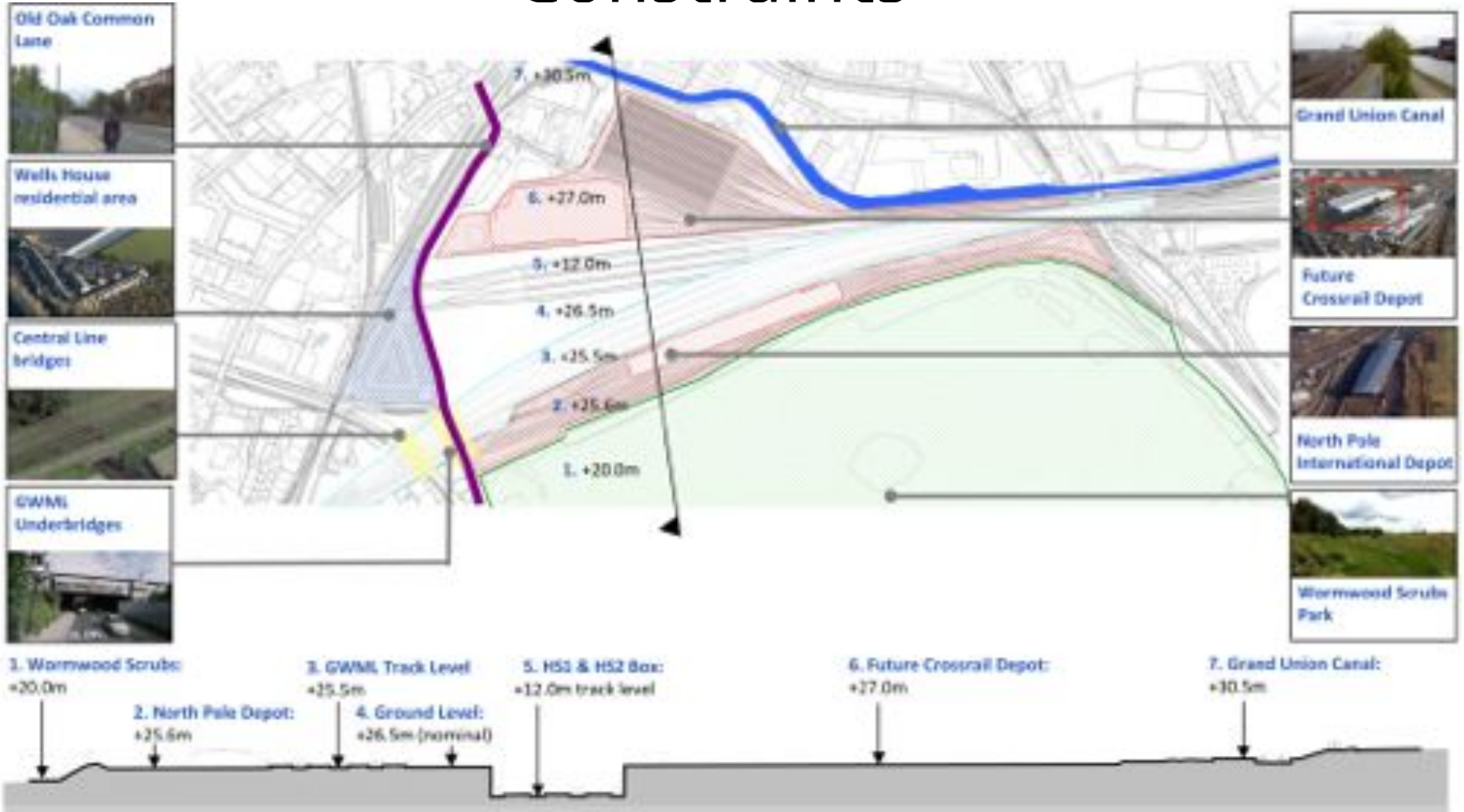
# HS2 Aspiration

- HS2 is committed to providing exceptional design and the new stations will be required to meet the highest passenger expectation and enhance the travelling experience.
- The stations will need to respond to the contextual and social needs of their locations in sympathetic and imaginative ways to contribute as fully as possible to the future development of their locations.
- It is anticipated that all the stations will become catalysts for regeneration and the stations will become landmarks and that the communities will come to identify with them with pride.

# Old Oak Common Station Site



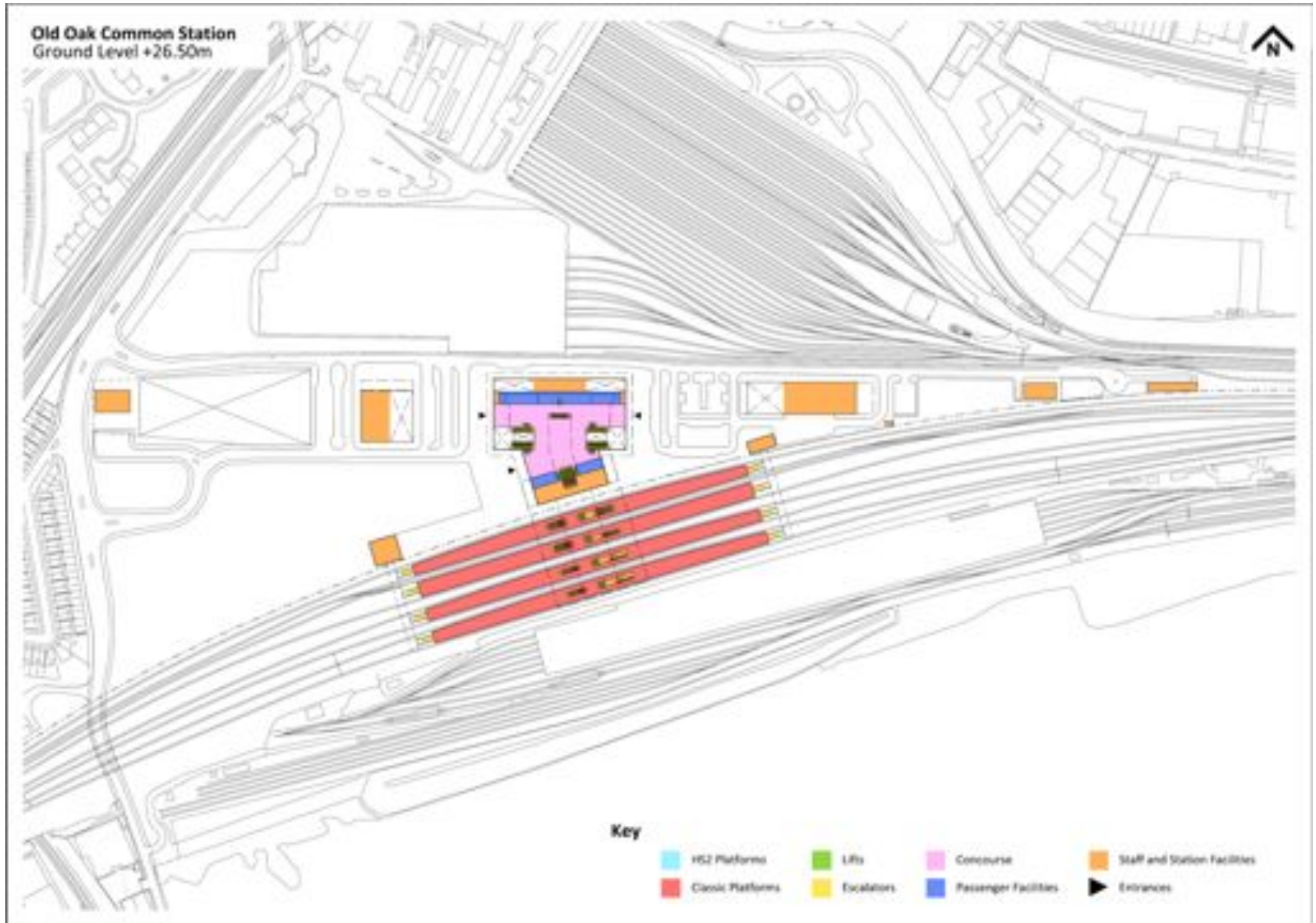
# Constraints



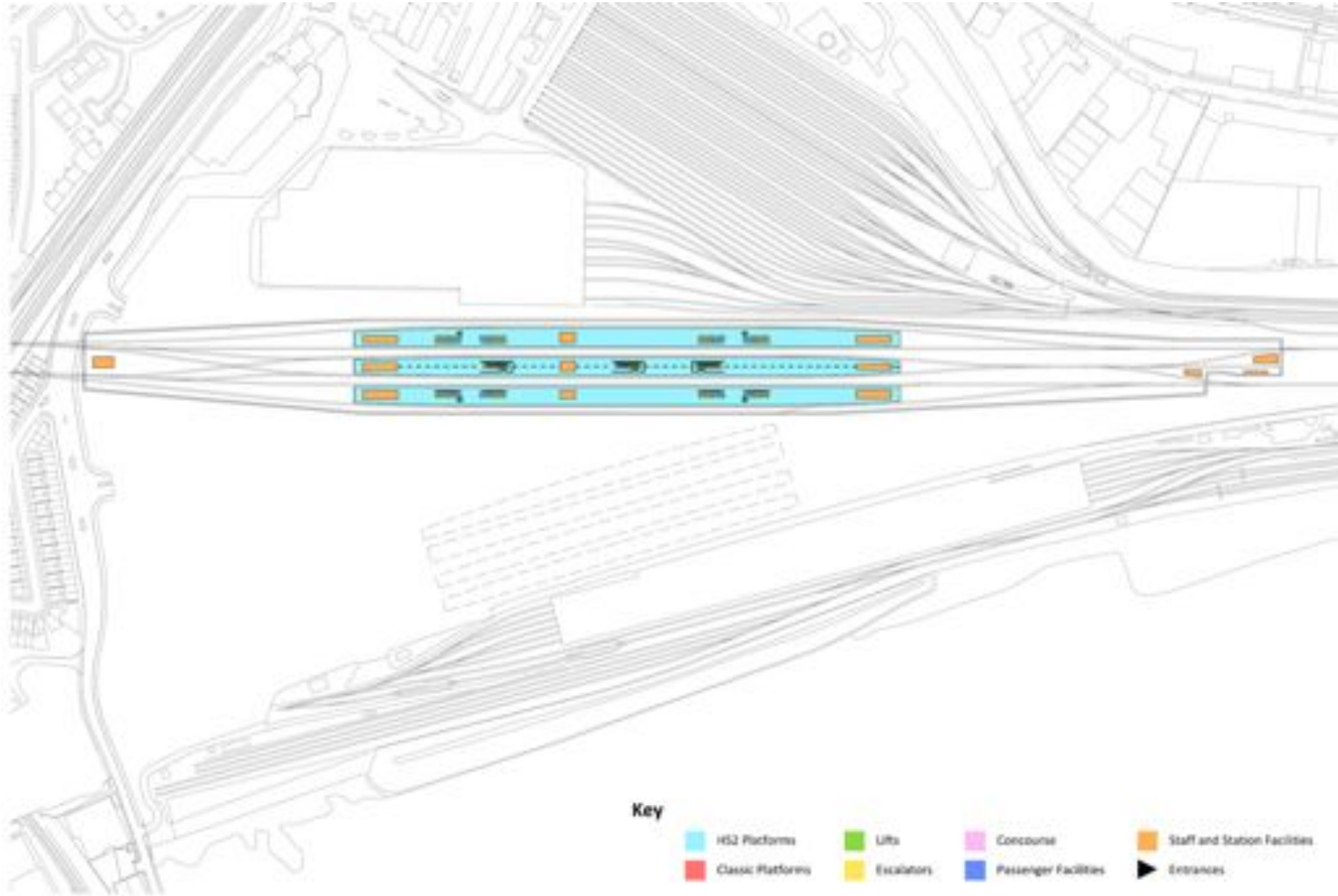
# Old Oak Common Bill Design Aerial View



# Old Oak Common Station Ground Level Plan



# Old Oak Common Station HS2 Platform Level Plan



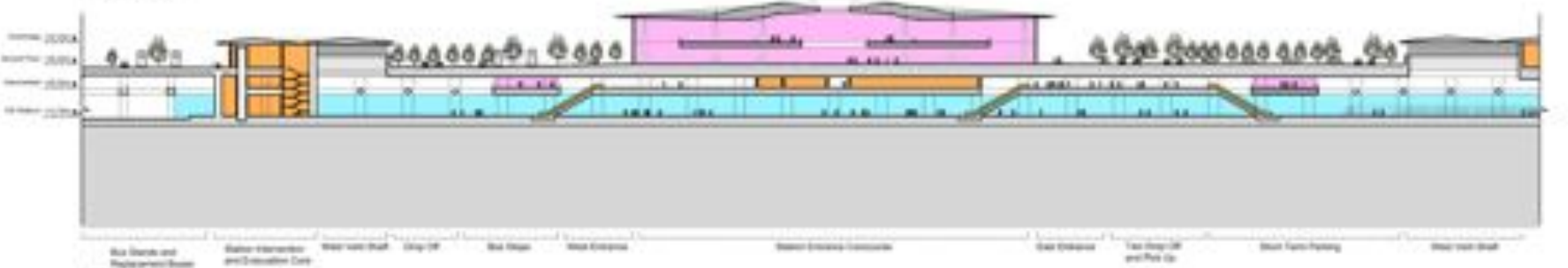


# Old Oak Common Station Sections and Elevations

OLD OAK COMMON STATION - Sections and Elevations



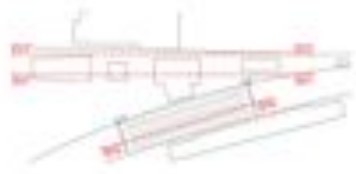
ELEVATION 01



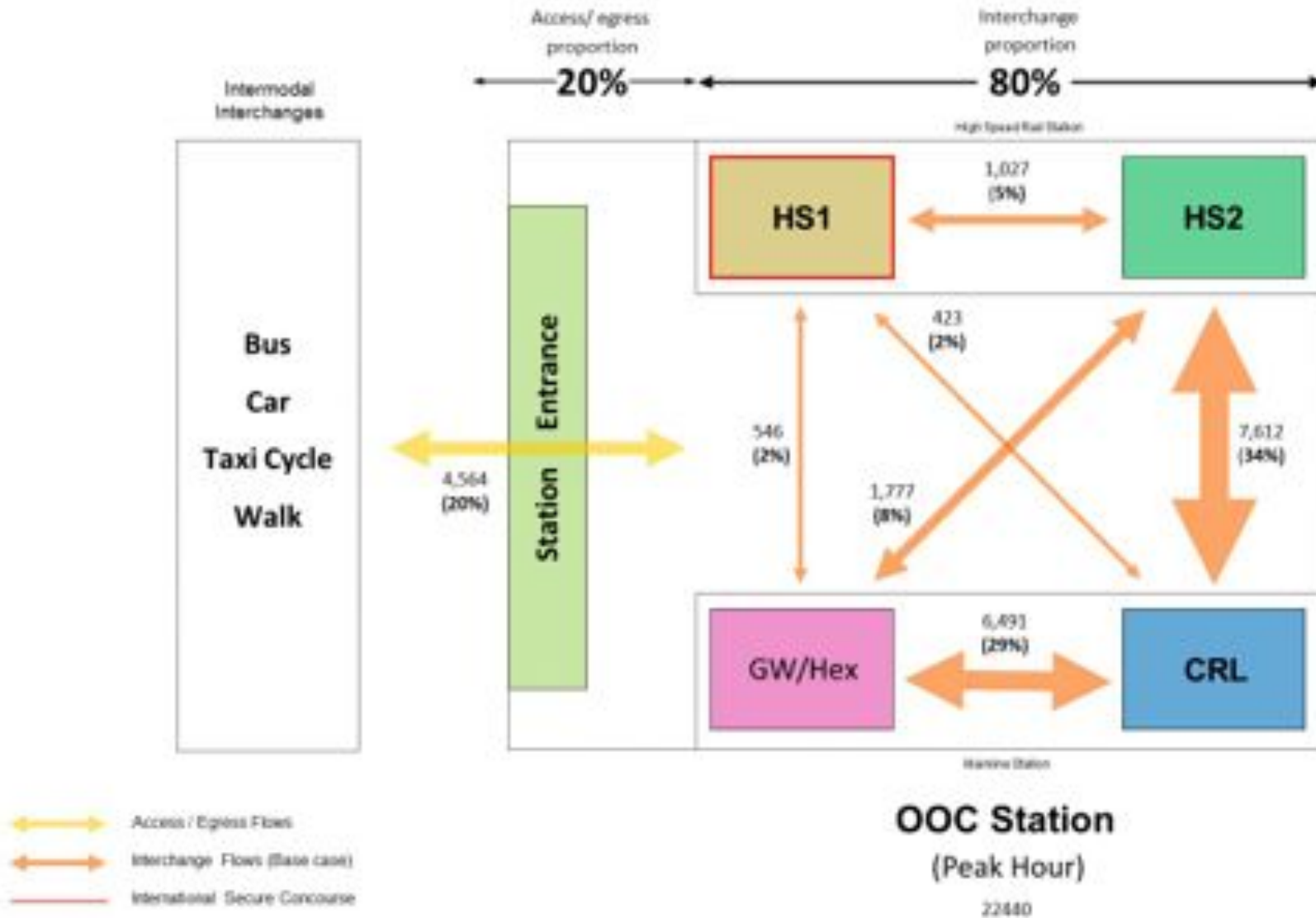
SECTION 01



SECTION 02



# Passenger Flows



Note:

Figure based on Old Oak Common Capacity Based Metrics with (i) HS1, TPO and (ii) revised assumptions, removed - Generic peak hour - Figure 4.1.1

# Old Oak - A vision for the Future June 2013



# Old Oak - A vision for the Future June 2013



# Old Oak - A vision for the Future June 2013



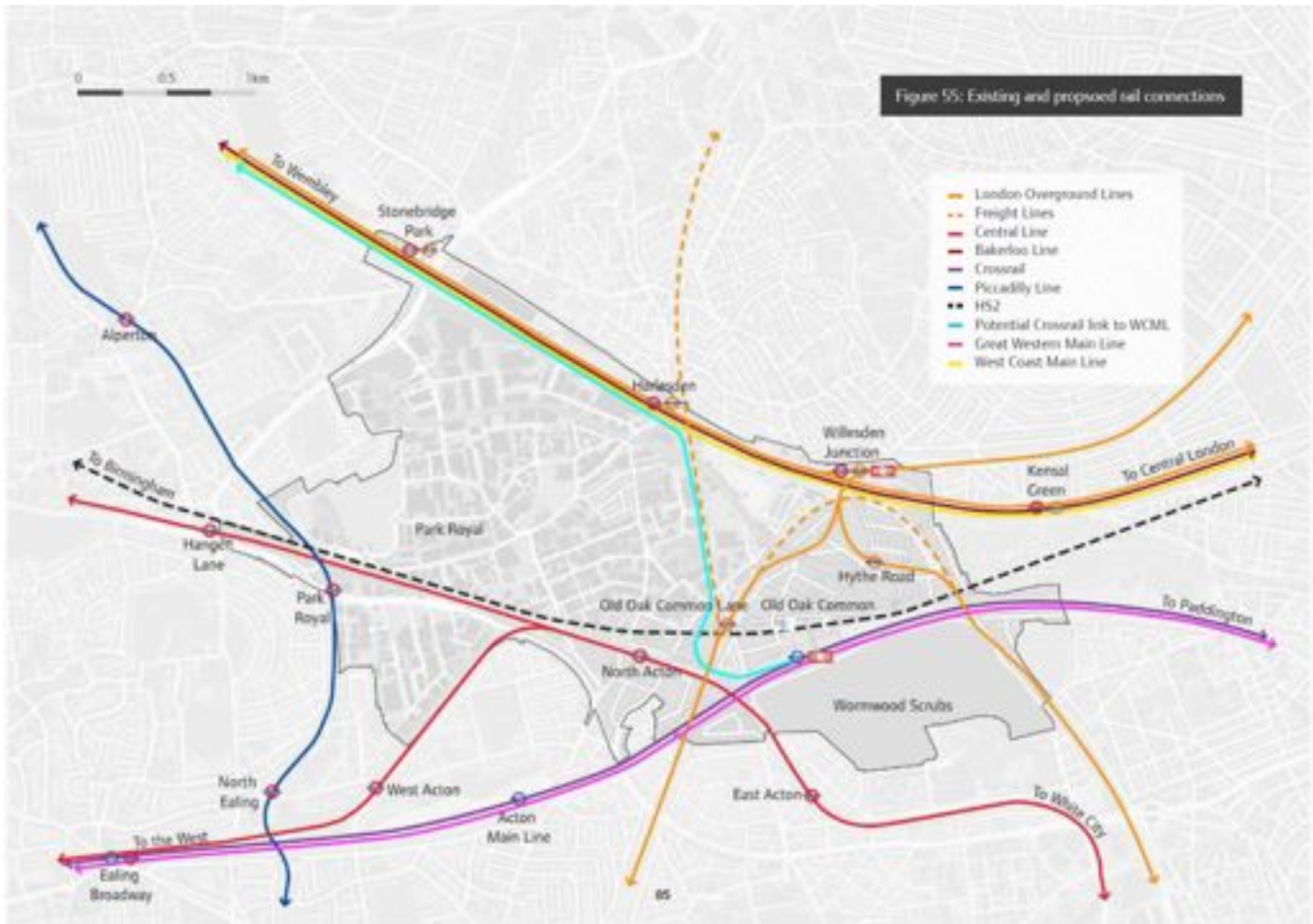
# Design Flexibility

- Support the creation of a new destination of exceptional quality
- Provide a state of the art intermodal interchange
- Be of an outstanding architectural quality
- Locate station accesses to facilitate regeneration

# Response to 2013 OAPF



# Old Oak & Park Royal OAPF Transport Plan 2015





# HS2 are Committed to Stakeholder Engagement

- Early dialogue with local councils, business groups and landowners is essential.
- Work together to seize the opportunity that HS2 presents.
- Develop station designs that maximises the opportunities they have identified for growth.
- Work with local transport groups to ensure supporting transport schemes are prioritised and integrated
- Develop effective governance to bring interested parties together to implement shared objectives.

